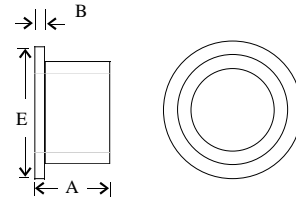


Molded Fittings

Flange Adapters - Butt Fusion

For Information Call (713) 645-2858
or fax (713) 645-1756

3/4" to 20" IPS Sizes, Injection Molded
22" to 36" See Fabricated Fittings Section
SDR 11 Standard - Others Sizes on Request
PE 3408



Nom. Pipe Size	SDR	Box Qty	Stock	Dim. A	Dim. B	Dim. E	Box Weight	Part Number
3/4	7-17	20	n	4	.38	1.85	2	FS007FHF007EB
1	7-17	20	y	4	.40	2.37	3	FS010FHF010EB
1-1/4	7-17	20	y	4	.40	2.80	4	FS012FHF012EB
1-1/2	7-17	20	y	4	.40	3.16	5	FS015FHF015EB
2	7-26	25	y	6	0.56	4.00	25	FS020FHF020EB
3	7-26	15	y	6	0.56	5.25	21.5	FS030FHF030EB
4	7-26	15	y	6	0.62	6.66	22.5	FS040FHF040EB
6	7-26	5	y	8	0.94	8.50	25	FS060FHF060EB
8	11-26	4	y	9	1.09	10.75	32.8	FS080FHF080EB
10	11-26	1	y	10	1.13	13.16	12.5	FS100FHF100EB
12	11-26	1	y	9.7	1.45	15.75	20	FS120FHF120EB
14	11-26	1	y	10.5	1.80	17.50	32	FS140FHF140EB
16	11-26	1	y	10.5	2.25	20.00	35.5	FS160FHF160EB
18	11-26	1	y	10.5	2.25	21.38	38	FS180FHF180EB
20	17-26	1	y	10	2.25	23.66	42	FS200FHF200EB